

CERTIFICATE OF CONFORMITY

Issue: 01

Certificate number: ESL-25-11789

Pursuant to provisions of the Certification scheme on Global Conformity Certification of fire and life safety products (CS-GCC, scheme type 5), Emirates Safety Laboratory hereby grants this certificate of conformity to the product described below:

**Fibre Cement Board, 8 mm thick EQUITONE [natura] panel &
Fibre Cement Board, 8 mm thick EQUITONE [natura] in External Wall System/Assembly**
(ESL system designation: FFBN-0299-11789)

Placed on the market under the name or trade mark of:

Etex Germany Exteriors GmbH
Dyckerhoffstrabe 95-105,
59269 Beckum, Germany

represented by:

Europanel Overseeas N.V
Kuiermansstraat 1,
1880 kapelle-op-den-bos, Belgium

Manufactured in the following location(s):



Etex Germany Exteriors GmbH
Dyckerhoffstrabe 95-105,
59269 Beckum, Germany

Complies with the requirements of the standard(s) as detailed below:

NFPA 285 - 2025 Standard Fire Test Method for Evaluation of Fire Propagation Characteristics of Exterior Wall Assemblies Containing Combustible Components.

EN 13501-1:2018 Fire classification of construction products and building elements - Part 1: Classification using data from reaction to fire tests.

The certificate was first issued on **21 March 2025** and remains valid under the condition that the Certificate Holder fulfils the requirements of the agreement on certification supervision no. **0384/SA/25**.



Tomasz Kielbasa
Certification Manager

21 March 2025
Date of issue

20 March 2028
Expiry date

This Certificate remains valid till date stated above, unless suspended, withdrawn or terminated. This certificate will not be valid if the manufacturer makes any changes affecting product conformity, which have not been notified to, and agreed in writing with ESL. This Certificate is an electronic document and shall not be reproduced (in any form) except in full. Certificate holder is under an obligation to make references to issued certificate only in conjunction with product(s) that conform to evaluated product construction. Prior to use of this certificate, please verify its validity at ESLdirectory

Appendix to Certificate of Conformity

No: **ESL-25-11789**Issue: **01**

CERTIFIED PRODUCT:

Product Description:

The Fibre Cement Board, 8 mm thick EQUITONE [natura] panel, is a coloured core panel with a coloured, semi-transparent double-layer acrylic finish. It is manufactured from a combination of cement, water, mineral fillers, cellulose fibres, synthetic reinforcing fibres, inorganic colour pigments (depending on the colour), and an acrylic coating.

Reaction to fire classification:

Product Description	Test Standards	Classification
Product name: 8 mm thick EQUITONE [natura] panel Product type: Autoclaved - Fibre Cement Board/Flat Sheets Density: 1650 kg/m ³	EN 13501-1:2018	A2-s1,d0

System/Assembly Description:

The Fibre Cement Board, 8 mm thick EQUITONE [natura] in the External Wall System/Assembly, is a non-loadbearing external wall system composed of 8 mm thick EQUITONE [natura] fibre cement board installed on aluminium horizontal profiles, fixed to aluminium vertical T-profiles using aluminium wall brackets on the base wall (substrate). Stonewool insulation is installed on the exterior face of the base wall (substrate). Cavity barriers are installed vertically and horizontally between the base wall (substrate) and the inner face of the fibre cement board.

External wall system/assembly fire propagation performance evaluation summary:

System Description	Test Standards	Test Result
Fibre Cement Board, 8 mm thick EQUITONE [natura] panel in External Wall System/Assembly	NFPA 285 - 2025	Pass




Signed for ESLTomasz Kielbasa
Certification Manager21 March 2025
Date of issue20 March 2028
Expiry date

This Certificate remains valid till date stated above, unless suspended, withdrawn or terminated. This certificate will not be valid if the manufacturer makes any changes affecting product conformity, which have not been notified to, and agreed in writing with ESL. This Certificate is an electronic document and shall not be reproduced (in any form) except in full. Certificate holder is under an obligation to make references to issued certificate only in conjunction with product(s) that conform to evaluated product construction. Prior to use of this certificate, please verify its validity at ESL.directory

Appendix to Certificate of Conformity

No: **ESL-25-11789**Issue: **01**Detailed specification of the components used in the external façade wall assembly/system:**Design no (reference drawings by manufacturer): Title - NFPA 285 fire test, dated 16/04/2024, pages 1 to 13, Rev: 03**

- a. Exterior cladding:
8mm thick EQUITONE [natura] fibre cement boards panels fixed to the horizontal profiles using Fischer Tergo+ concealed fixing system. Clasp brackets shall be inserted into the horizontal profiles and adjusted to hold the panels in place. The maximum gap allowed between adjacent panels is 10 mm. The maximum permitted air cavity between the insulation's exterior face and the panel's interior face is 62 mm.
Product Manufacturer: Etex Germany Exteriors GmbH
- b. Fixing components:
1. Wall brackets: Aluminium 6061 T6 brackets shall be anchored onto the base wall (substrate) using an M10 × 51.25 mm threaded rod with hex nuts.
Bracket sizes:
 - reference 568232 (big brackets) - 150 mm × 60 mm × 40 mm × 4 mm (length x height x width x thickness)
 - reference 568234 (small brackets) - 80 mm × 60 mm × 40 mm × 4 mm (length x height x width x thickness)
 2. Vertical T profile: Aluminium 6061 T6 (Ref: 559655) profiles shall be fixed into the wall brackets using blind rivets Ø4.8 × 12mm.
 3. Horizontal profile: Aluminium 6061 T6 (Ref: ATK103S-20) profiles shall be fixed into the vertical T-profiles using two Ø4.8 × 12mm blind rivets.
 4. Clasp Bracket: The clasp bracket (Ref: FHC Agraffe 562915) shall be affixed to the panel with the assistance of panel anchors (Tergo+), spaced at a nominal distance from the horizontal profiles.
 5. Panel anchor: Stainless steel A4 (Ref: Tergo+ 11x6 532641) shall be used to fix clasp brackets onto EQUITONE [natura] panels.
Products manufacturer: Fischer (for Horizontal profile, Wall brackets, Vertical T-profile, Clasp Bracket, & Panel Anchor)
- c. Cavity insulation:
A single layer of 50 mm thick stone wool insulation with a density of 50 kg/m³ (Ref: SRW Panel) shall be installed on the exterior of the base wall (substrate), except at the locations of the cavity fire barriers, using Ø8 × 140mm Fischer insulation anchors.
Products manufacturer: Saudi Rockwool Factory
- d. Cavity barrier:
1. Horizontal cavity barrier
RH25G-060/60 open-state cavity fire barriers, 90 mm thickness. × 75 kg/m³ density, shall be installed at the head of the window opening and every floor termination using RS350G fixing brackets. The fixing brackets shall be fixed to the base wall (substrate) using Ø5 × 35mm screws.
 2. Vertical cavity barrier
RVG-090/060 cavity fire barriers, 90 mm thickness. × 75 kg/m³ density shall be installed along the full height of the specimen at each vertical edge of the window opening using B195G/110 G fixing brackets. The fixing brackets shall be fixed to the base wall (substrate) using Ø5 × 35mm screws.
Products manufacturer: Siderise Insulation Ltd.
- e. Window flashing: The 1.5 mm-thick galvanised metal sheet shall be fixed along the window opening using an M10 × 51.25 mm Fischer threaded rod with hex bolts on each side. Subsequently, 8-mm-thick Equitone Natura panels shall be affixed on top of the galvanised metal on the window flashing.
- f. Base wall: 15.9 mm thick Type X (GW-TX) gypsum board material (interior & exterior) shall be installed on a galvanised steel framing consisting of 92 × 32 × 1.2 mm studs and 95 × 25 × 1.2 mm tracks, using Ø3.5 × 35 mm self-tapping screws.


Signed for ESLTomasz Kielbasa
Certification Manager21 March 2025
Date of issue20 March 2028
Expiry date

This Certificate remains valid till date stated above, unless suspended, withdrawn or terminated. This certificate will not be valid if the manufacturer makes any changes affecting product conformity, which have not been notified to, and agreed in writing with ESL. This Certificate is an electronic document and shall not be reproduced (in any form) except in full. Certificate holder is under an obligation to make references to issued certificate only in conjunction with product(s) that conform to evaluated product construction. Prior to use of this certificate, please verify its validity at ESL.directory

Appendix to Certificate of Conformity

No: **ESL-25-11789**

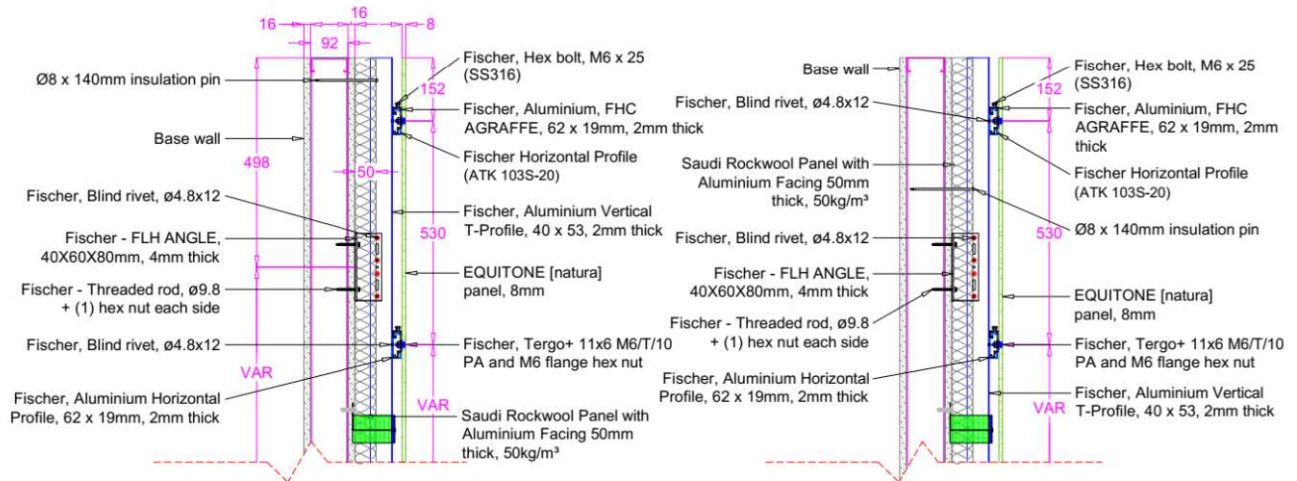
Issue: **01**


Fig 1: Fibre Cement Board, 8mm thick EQUITONE [natura] in External Wall System/Assembly

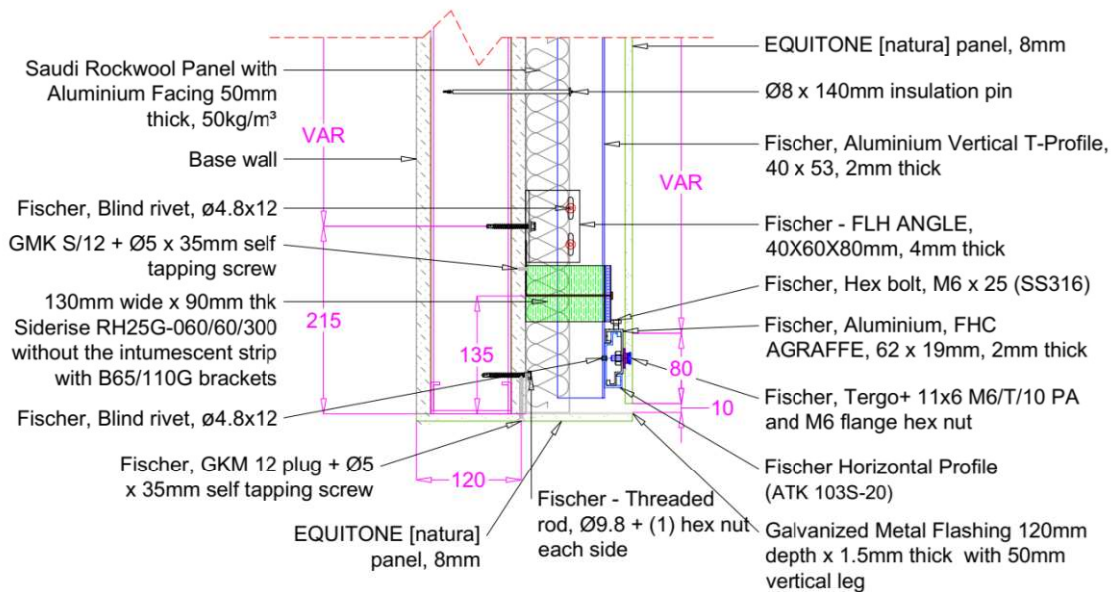


Fig 2: Fibre Cement Board, 8mm thick EQUITONE [natura] in External Wall System/Assembly



Tomasz Kielbasa
Certification Manager

21 March 2025
Date of issue

20 March 2028
Expiry date

This Certificate remains valid till date stated above, unless suspended, withdrawn or terminated. This certificate will not be valid if the manufacturer makes any changes affecting product conformity, which have not been notified to, and agreed in writing with ESL. This Certificate is an electronic document and shall not be reproduced (in any form) except in full. Certificate holder is under an obligation to make references to issued certificate only in conjunction with product(s) that conform to evaluated product construction. Prior to use of this certificate, please verify its validity at ESL directory

Appendix to Certificate of Conformity

No: **ESL-25-11789**

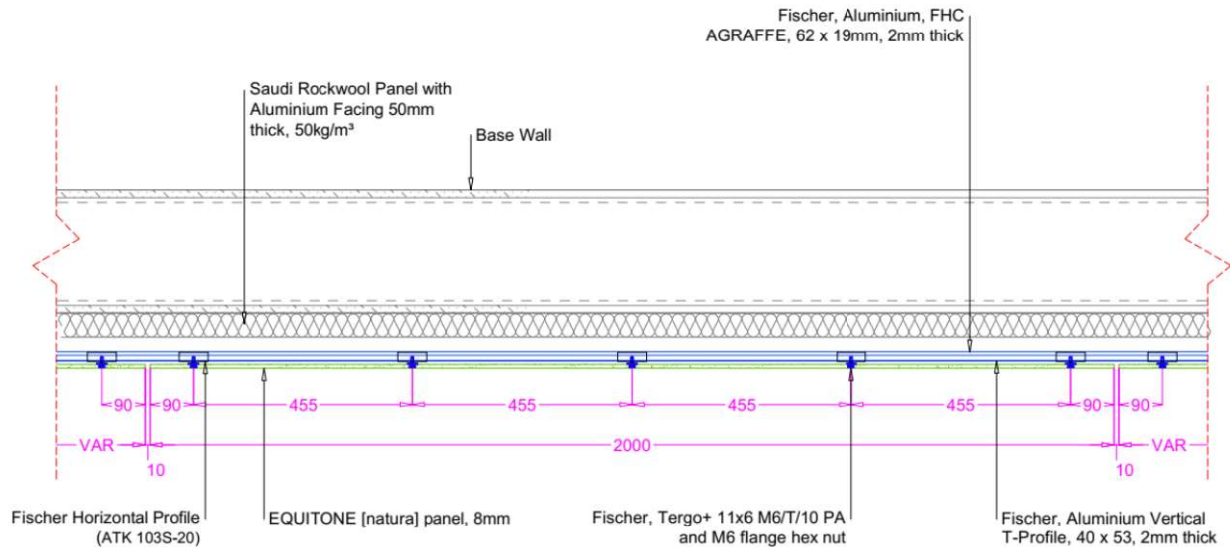
Issue: **01**


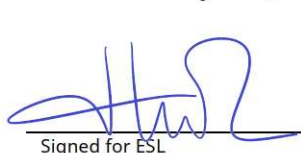

Fig 3: Fibre Cement Board, 8mm thick EQUITONE [natura] in External Wall System/Assembly

Notes:

1. The system/assembly tested on a non-loadbearing steel base wall is permitted for installation on concrete walls or concrete masonry unit (CMU) walls.

Limitation of use:

1. This certification covers the reaction to fire of EQUITONE [natura] fibre cement board and the fire propagation performance of the external wall system/assembly with the specified component configurations.
2. The reaction to fire composition of EQUITONE [natura] fibre cement board has been evaluated and is held in the ESL file. This certificate applies exclusively to the specific composition recorded. Any deviation or alteration in the product's composition from the documented specifications will render this certificate invalid.
3. This certification does not cover the fire resistance performance of the exterior wall assembly.
4. The actual construction of the system/assembly must conform to the certified design of the system/assembly.
5. System/assembly testing and certification in compliance with NFPA 285 - 2025 does not assess the performance of individual components (e.g., thermal insulation, cavity fire barriers, etc.) integrated within the system/assembly.

Tomasz Kielbasa
Certification Manager

21 March 2025
Date of issue

20 March 2028
Expiry date

This Certificate remains valid till date stated above, unless suspended, withdrawn or terminated. This certificate will not be valid if the manufacturer makes any changes affecting product conformity, which have not been notified to, and agreed in writing with ESL. This Certificate is an electronic document and shall not be reproduced (in any form) except in full. Certificate holder is under an obligation to make references to issued certificate only in conjunction with product(s) that conform to evaluated product construction. Prior to use of this certificate, please verify its validity at ESL.directory